



# CFS-PL FIRESTOP PLUG

Tested and assessed as per AS 1530.4 and AS 4072.1

- ✓ NCC compliant
- ✓ Fastest seal for holes up to 202 mm in diameter
- ✓ Tested with various types of cables, cable bundles and conduits
- ✓ Cast-in place option available
- ✓ Very easy to install
- ✓ Dust and fibre-free



Hilti CFS-PL Firestop Plug is a pre-cured firestop plug that is designed for use as a dust and fibre-free firestop seal capable of achieving an FRL of up to -/120/120. These ready-to-use plugs provide the fastest way to create an immediate firestop seal around **cables, cable bundles and conduits** through circular openings up to 202mm in diameter in walls and floors. The plugs may also be cast in place using a PVC sleeve. Hilti CFS-PL Firestop Plug may be used with various base materials such as:



concrete & aerated concrete



masonry



prefabricated panels



plasterboard

Technical Data	
Chemical Basis	Polyurethane
Sizes Available (Diameter)	107 mm 158 mm 132 mm 202 mm
Height	75 mm
Density	Approx. 270 kg/m <sup>3</sup>
Colour	Red
Expansion Temperature	Approx. 200°C
Expansion Ratio	Up to 1:3
LEED VOC	4.9 g/l

## Features

- Easy to use
- Can be cast in place with a PVC sleeve which may be left in the opening
- Can be easily cut to size
- Easy re-penetration
- Halogen and solvent free
- Paintable

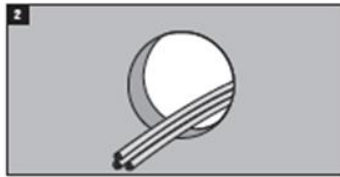
No space required between penetrations and the edge of the opening.



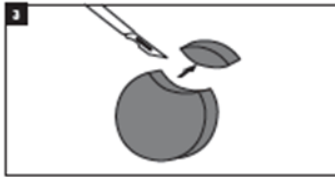
## INSTRUCTIONS FOR USE



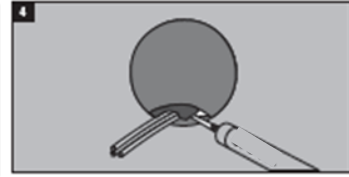
Clean the opening.



Lay services through the opening.

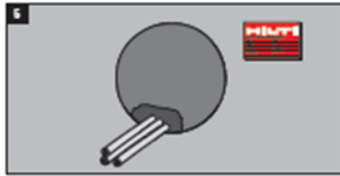


Cut CFS-PL Firestop Plugs as needed to accommodate services. No more than 60% of the seal must be penetrated.

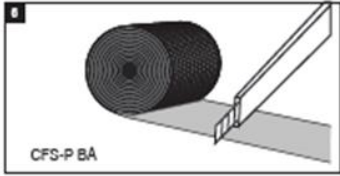


Seal around services with Hilti CP 611A Firestop Intumescent Sealant.

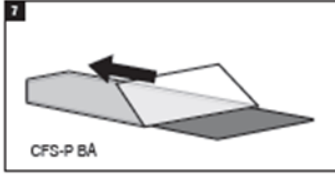
Additional steps if CFS-BA Firestop Putty Bandage is required:



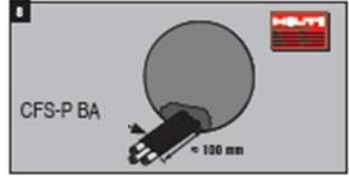
Fasten firestop identification label if required.



Cut CFS-BA Firestop Putty Bandage to the desired length.



Peel off protective strip to expose adhesive surface.



Wrap CFS-BA Firestop Putty Bandage around services as required.

## APPROVALS

Refer to Regulatory Information Report No. 27937400 on [www.hilti.com.au](http://www.hilti.com.au) for information on deemed-to-satisfy solutions using Hilti CFS-PL Firestop Plug.

## PAINTABILITY

A layer of silicone or water based acrylic paint may be applied. Coatings must be applied as a thin layer (1 mm max). Coatings may show discoloration and peel off over time – especially if there is movement. However, If plastic pipes run through the penetration, painting is not allowed. Customers need to check independently if the relevant coatings are compatible with other components of the penetration, and that country specific approvals do not prohibit the coating of firestop products.

## STORAGE & HANDLING

Hilti CFS-PL Firestop Plug has no shelf life limitations. Store in a dry environment within a temperature range of -5 - 40 °C

## HILTI ENGINEERING SERVICES

Are you planning your next project?  
We are here to work together with you to help find the best solution.

Email us at [AUTechnicalCentre@hilti.com](mailto:AUTechnicalCentre@hilti.com) or call us at 131 292.

