



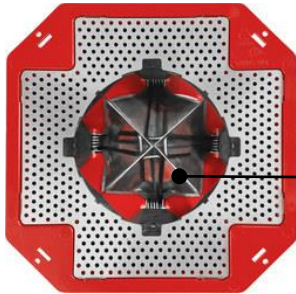
# CFWC 100 FIRESTOP FLOOR WASTE COLLAR

Tested and assessed as per AS 1530.4 and AS 4072.1

- ✓ NCC compliant
- ✓ Specifically tested for floor waste applications
- ✓ Tested with 100mm Ø uPVC-SC pipes
- ✓ Reliable 4 ways active spring design



**Hilti CFWC 100 Firestop Collar** is an easy to use, highly reliable cast-in collar that is designed for floor waste applications, and is capable of achieving an FRL of up to -/240/180. Hilti CFWC 100 Firestop Collar is fitted with an intumescent band and an active spring that keeps pipes firmly in place. It comes with an optional recess plate under to collar that allows for a 25mm recess to help maximise vertical space in the floor below.



4 ways active spring

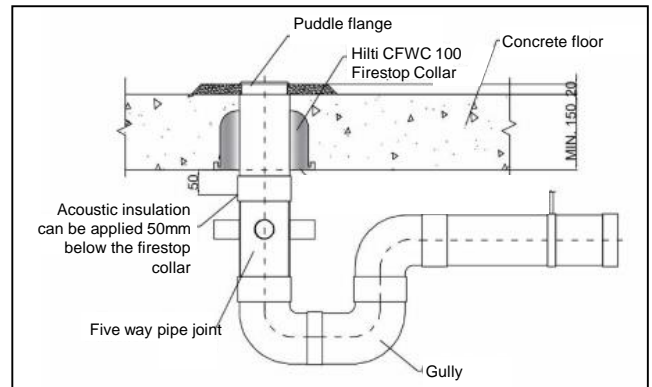
## Features

- Easy one step cast-in installation
- Tested with 110mm diameter UPVC sandwich core pipes in a variety of configurations
- Locks pipes in the correct position
- Space saving

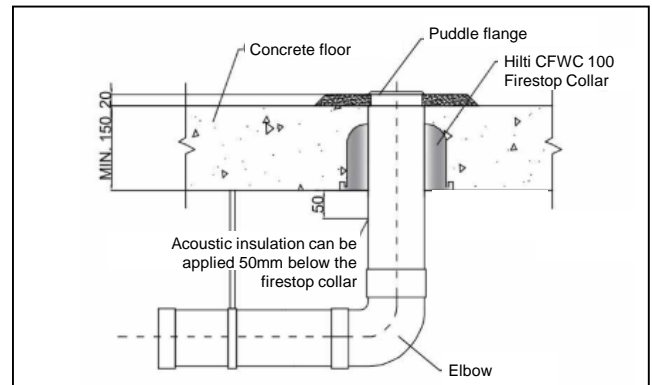
## Technical Data

Packaging (per box)	12 pcs/box
Plastic Housing Colour	Red
Recess Plate Colour	Red, black
Width	218 mm
Height	117 mm
Maximum Outside Pipe Diameter	110 mm
Minimum Slab Thickness	150 mm

## TESTED CONFIGURATIONS

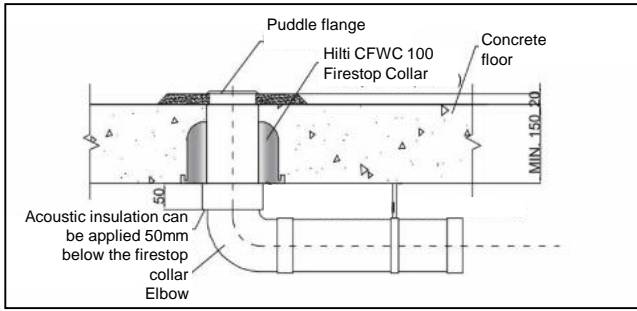


110mm uPVC-SC pipe w/ five way pipe joint and gully

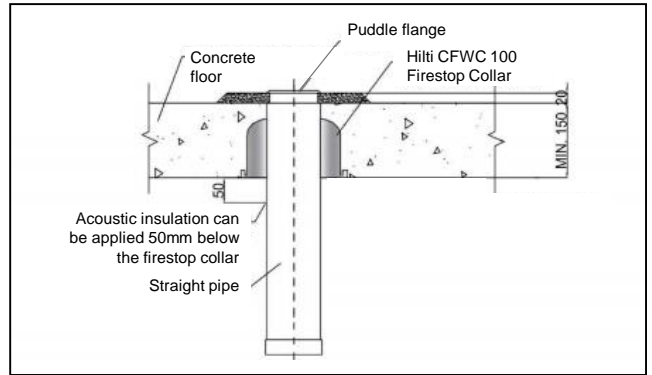


110mm uPVC-SC pipe w/ elbow away from the underside of the Hilti CFWC 100 Firestop Collar

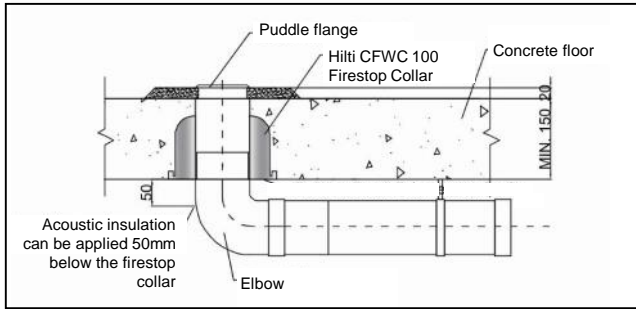
## TESTED CONFIGURATIONS



**110mm uPVC-SC pipe w/ elbow flush w/ underside of the Hilti CFWC 100 Firestop Collar**



**110mm uPVC-SC pipe w/ straight pipe**

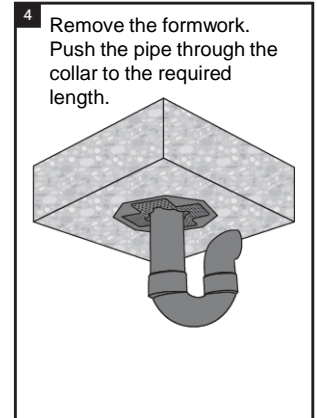
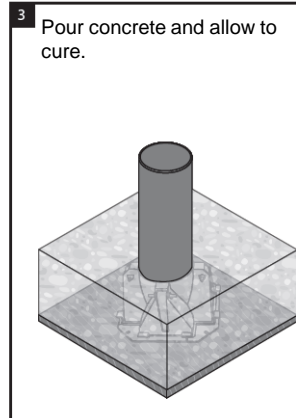
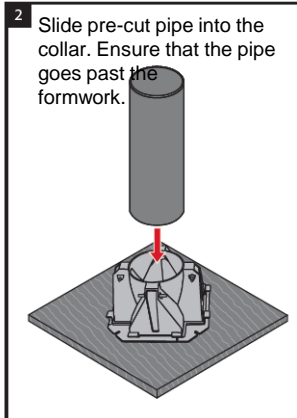
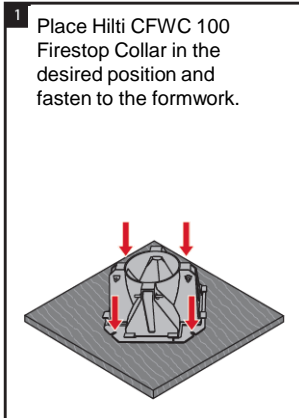


**110mm uPVC-SC pipe w/ internal elbow extending into the Hilti CFWC 100 Firestop Collar**

## APPROVALS

Refer to Regulatory Information Report No. 53577700.1 on [www.hilti.com.au](http://www.hilti.com.au) for information on deemed-to-satisfy solutions using Hilti CFWC Firestop Collar

## INSTRUCTIONS FOR USE



*Note: A recess plate is provided with each Hilti CFWC 100 Firestop Floor Waste Collar as an optional accessory. If using the recess plate, fasten the collar with the recess plate as in Step 1 and remove the recess plate in Step 4.*

## PAINTABILITY

Hilti CFWC 100 Firestop Floor Waste Collar must not be painted.

## STORAGE AND HANDLING

Hilti CFWC 100 Firestop Floor Waste Collar has no shelf life limitations.

Store CFWC 100 in a dry environment within a temperature range of -5 - 50 °C

## HILTI ENGINEERING SERVICES

Are you planning your next project?  
We are here to work together with you to help find the best solution.

Email us at [AUTechnicalCentre@hilti.com](mailto:AUTechnicalCentre@hilti.com) or call us at 131 292.

