



CFS-B FIRESTOP BANDAGE

Tested and assessed as per AS 1530.4 and AS 4072.1

- ✓ Ideal for firestopping insulated metal pipes through walls and floors
- ✓ Easy to install

Hilti CFS-B Firestop Bandage helps create a fire and smoke barrier around **copper and steel pipes with Armaflex AF or mineral wool insulation** to achieve an FRL of up to -/120/120 for both wall and floor applications. Hilti CFS-B Firestop Bandage is approved for firestopping insulated metal pipes penetrating through various base materials including:



concrete & aerated concrete



masonry



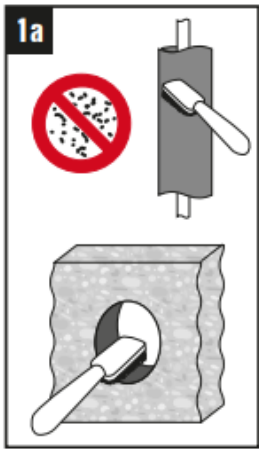
plasterboard

Technical Data	
Dimensions (L x W x H)	10000 x 125 x 2 mm
Colour	Grey/White
Expansion Rate	1:15
Expansion Temperature	180 °C
LEED VOC	9.2 g/l

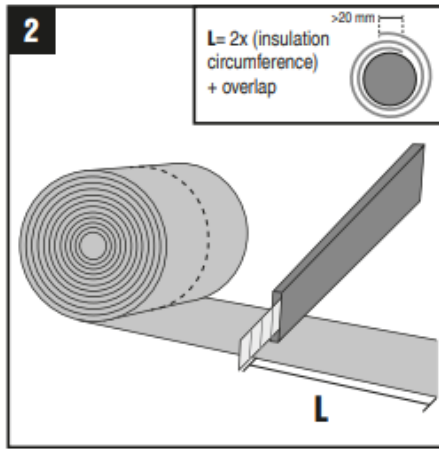
Features

- Easy to use
- Simple and quick installation – no hooks, anchors or drilling
- No need to interrupt the pipe insulation material within the wall or floor penetration
- Contains no asbestos, fibers, solvents, heavy metal compounds or formaldehyde

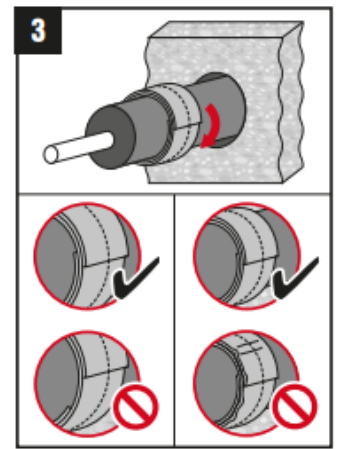
INSTRUCTIONS FOR USE



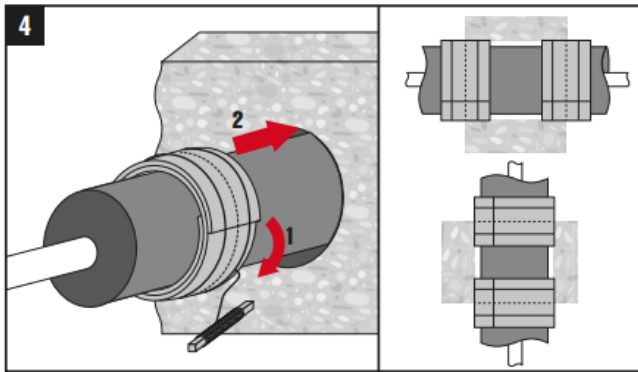
Ensure that the pipe and the opening are clean and free of dust.



Cut CFS-B Firestop Bandage to the correct length, The length should be equal to twice the circumference of the pipe (including insulation) plus 20mm.

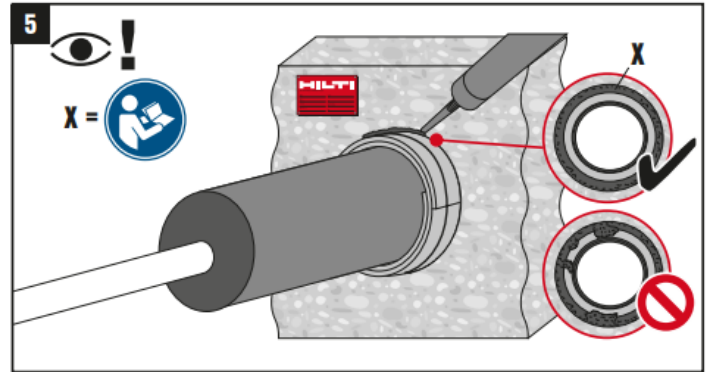


Wrap CFS-B Firestop Bandage around the pipe. Ensure that the two ends line up as illustrated above.



Secure the CFS-B bandage with two strips of metal ties as shown above. Slide the CFS-B bandage into the opening so that the centre marker lines up with the edge of the opening.

CFS-B Firestop Bandage is required on both sides of the wall or floor.



Seal around the annular gap with CP 606 Flexible Firestop Sealant or CFS-F FX Flexible Foam. Refer to the approval document for more details. Fasten firestop identification sticker if required.

APPROVALS

Approval documentation is available upon request.

PAINTABILITY

Hilti CFS-B Firestop Bandage must not be painted.

STORAGE & HANDLING

Hilti CFS-B Firestop Bandage has no shelf life limitations. The storage temperature must be kept between -5 - 50 °C.

HILTI ENGINEERING SERVICES

Are you planning your next project?
We are here to work together with you to help find the best solution.

Email us at AUTechnicalCentre@hilti.com or call us on 131 292.

