



# CFS-SL GA FIRESTOP SLEEVE

- ✓ Superior smoke tightness and air flow control performance
- ✓ Unique twist to open and close mechanism for quick and easy firestopping of cables and conduits



**HilTI CFS-SL GA Firestop Sleeve** is the perfect firestop solution for applications where cable configurations are frequently changed such as in data centers, server rooms, hospitals, event halls or production plants.

**HilTI CFS-SL GA Firestop Sleeve** is equipped with a twist to open and close mechanism that allows for quick and easy re-cabling without the need for tools.

**HilTI CFS-SL GA Firestop Sleeve** is approved for use in a variety of base materials including plasterboard, concrete, aerated concrete, masonry and sandwich panels.

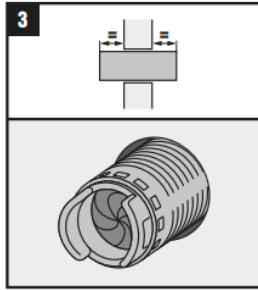
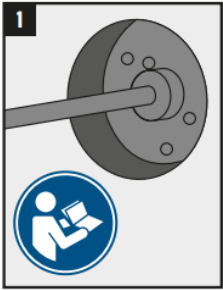
Technical Data			
<b>Sizes Available</b>			
	Outside Diameter (mm)	Opening Size (mm)	Wall/Floor Thickness (mm)
CFS-SL GA Small	63	66 - 73	100 -200
CFS-SL GA Medium	110	113 - 122	100 - 200
CFS-SL GA Long	110	113 - 122	200 -300
<b>Expansion Temperature</b>	160 °C		
<b>Expansion Ratio</b>	Up to 1:40		
<b>Metal</b>	Steel with Zinc Coating		
<b>Plastic</b>	Acrylonitrile Butadiene Styrene (ABS)		
<b>Fabric</b>	Glass Fiber		

## Features

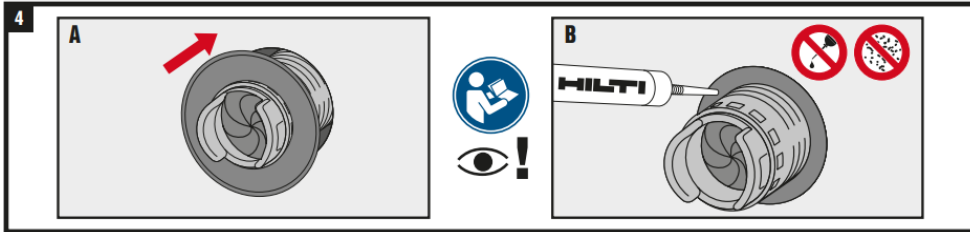
- Simple and quick installation – no hooks, anchors or drilling
- May be used to firestop cables and conduits going through circular openings in walls or floors up to 300mm thick
- Best in class smoke seal
- Easy to inspect and certify



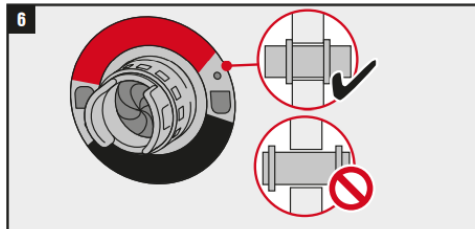
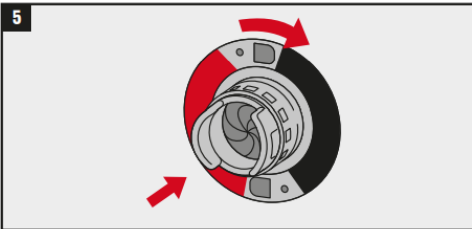
## INSTRUCTIONS FOR USE



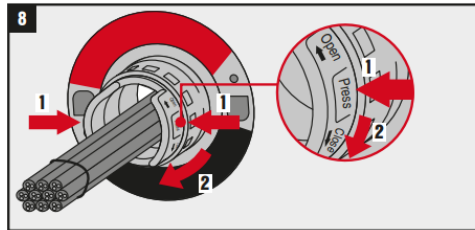
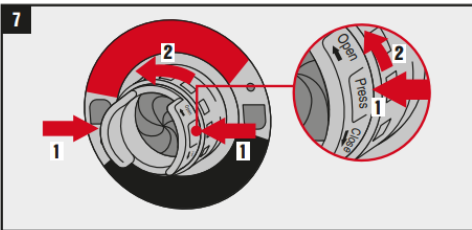
1. Core the hole ensuring that the diameter falls within the range specified in the approval document.
2. Clean the opening and insert the firestop sleeve through.
3. Make sure that the sleeve is positioned such that there is an equal length protruding from either side of the wall.



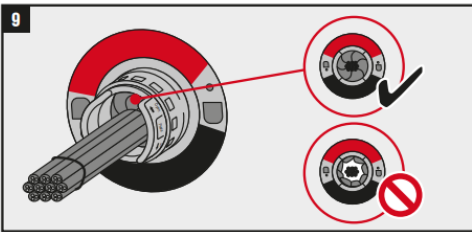
4. Refer to the approval document. If the application does not require CP 606 Sealant in the annular gap, fit the rubber gaskets through the sleeve on both sides of the wall (A). If CP 606 Sealant is needed (B), apply the sealant as specified in the approval document.



5. Fit the metal flanges onto the sleeve.
6. Keep spinning the flanges down the sleeve until they are sitting tightly on the surface of the wall on both sides.



7. Open the sleeve by pressing down on the part labelled 1 and twisting.
8. Push cables/conduits through, and twist the sleeve towards the opposite direction to close.



9. Ensure that there is no gap between the cables/conduits and the glass-fibre fabric inside the sleeve.

## APPROVALS

Approval documentation is available upon request.

## PAINTABILITY

It is not recommended to paint inside the CFS-SL GA Firestop Sleeve.

## STORAGE & HANDLING

Hilti CFS-SL GA Firestop Sleeve has no shelf life limitations. The storage temperature must be kept between -5 - 50 °C.

## HILTI ENGINEERING SERVICES

Are you planning your next project?  
We are here to help you find the best solution.

Email us at [AUTechnicalCentre@hilti.com](mailto:AUTechnicalCentre@hilti.com) or call us on 131 292.

