

# HILTI

Hilti SAFEset  
chemical  
anchoring



**One giant leap.**

**Hilti. Outperform. Outlast.**

SAFEset is a registered trade mark of Hilti.

## Applications

- Post-installed rebar connections for concrete slab, column or wall extensions
- Heavy-duty anchoring with threaded rod in cracked or uncracked concrete, e.g. for steel beams, columns, manufacturing equipment or ledger angles
- Facade installation, steel and metal construction, installation of railings and safety barriers

## What does SAFEset mean?

Hilti SAFEset Technology eliminates the most load-affecting and time-consuming step in the installation process: cleaning the hole before injection of the adhesive. The system improves reliability because the specified application is being performed on the jobsite just as it has been designed to in the plans.

## A small step for contractors. And a giant leap forward for your next job.

Now you can install anchor rod and post-installed rebar connections with more confidence. Inadequately cleaning holes during installation can reduce the performance of conventional chemical anchor systems significantly. Hilti SAFEset Technology eliminates this factor almost entirely – in both cracked and uncracked concrete, and with anchor rods or post-installed rebar.

**Hilti proudly presents Hilti SAFEset Technology  
with the industry-leading,  
injectable adhesive  
anchors -  
HIT-HY 200 and  
HIT-RE 500.**



## Introducing SAFEset Technology

Products featuring Hilti SAFEset Technology are approved for installation using Hilti's innovative zero cleaning or auto-cleaning solutions.

Hilti's zero cleaning solution involves the use of HIT-HY 200 with HIT-Z anchor rods. Using this method, dust can be left in the anchor hole without impacting holding values. ETA approved with Hilti HIT-HY 200.

Auto-cleaning installation is as simple as it sounds. This involves drilling the anchor hole using a Hilti hollow drill bit with a Hilti vacuum system attached. Using this method, the dust is sucked out of the hole during the drilling process, thereby eliminating the need for further cleaning. ETA approved with Hilti HIT-HY 200 and HIT-RE 500.



## Introducing Hilti SAFEset Technology

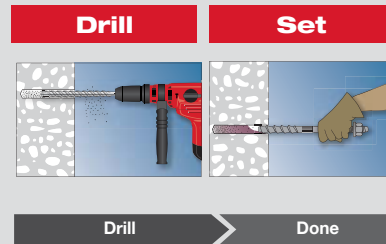
Once in a blue moon, something comes along with the power to accelerate the way you work.

**SAFEset**

SAFEset is a registered trade mark of Hilti.

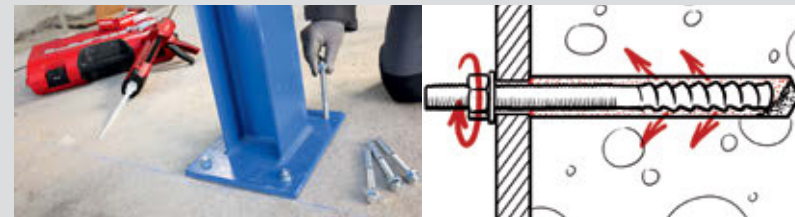
### 1 Zero cleaning solution. HIT-Z anchor rods + HIT-HY 200

The new Hilti HIT-Z anchor rod works as a torque-controlled bonded anchor. Because of their unique shape, HIT-Z anchor rods, used in hammer-drilled holes in dry or water-saturated concrete above 5°C, are not affected by uncleaned holes. The benefits are clear: fewer steps and more productivity in anchoring applications.



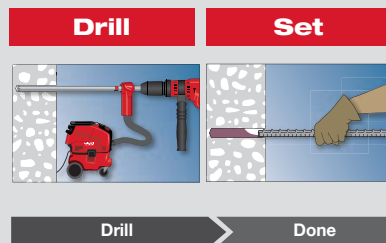
**Hilti SAFEset Technology**  
Up to 60% faster!

Anchor diameter range	M8 to M20
Material	Carbon or stainless steel (A4)
Embedment depth	Up to 12 times rod diameter
Concrete compressive strengths	C20/25 to C50/60
Installation temperature range	5°C to 40°C



### 2 Auto-cleaning solution. Hollow drill bits + HIT-HY 200 / HIT-RE 500

Hilti TE-CD and TE-YD hollow drill bits, in conjunction with HIT-HY 200 or HIT-RE 500, make subsequent hole cleaning completely unnecessary. Dust is removed by the Hilti vacuum system while drilling is in progress for faster drilling and a virtually dustless working environment.



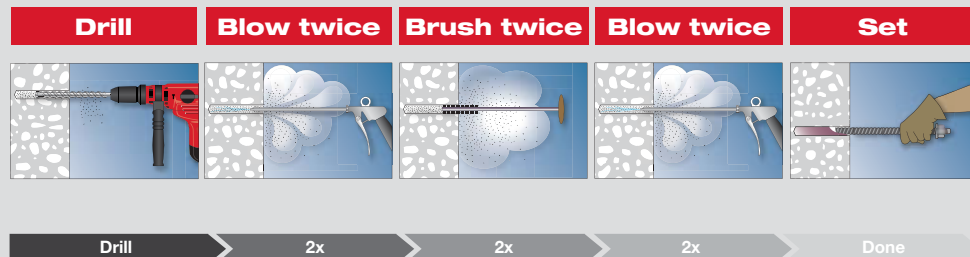
**Hilti SAFEset Technology**  
Up to 60% faster!

Rebar diameter range	N10 to N26
Threaded rod diameters	M10 to M24
Embedment depths	Up to 400 mm
Concrete compressive strengths	C20/25 to C50/60
Installation temperature range	-10°C to 40°C



### 3 Manual cleaning. Brush and blow

Another option is to continue using the traditional hole cleaning method with any Hilti HIT system for superior performance.



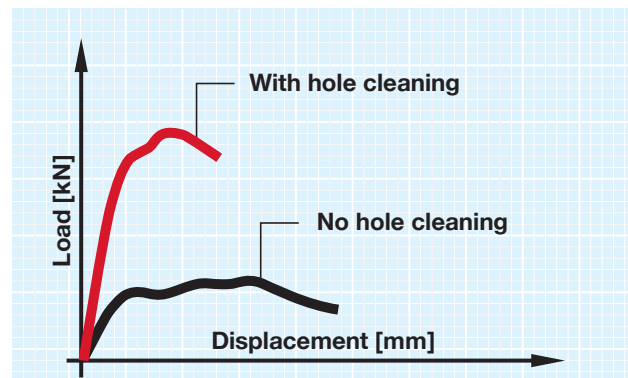
Rebar diameter range	N8 to N36
Threaded rod diameters	M8 to M36
Embedment depth	Up to 20 times element diameter
Concrete compressive strengths	C20/25 to C50/60
Installation temperature range	-10°C to 40°C



## No cleaning required. Set anchors and rebar reliably.

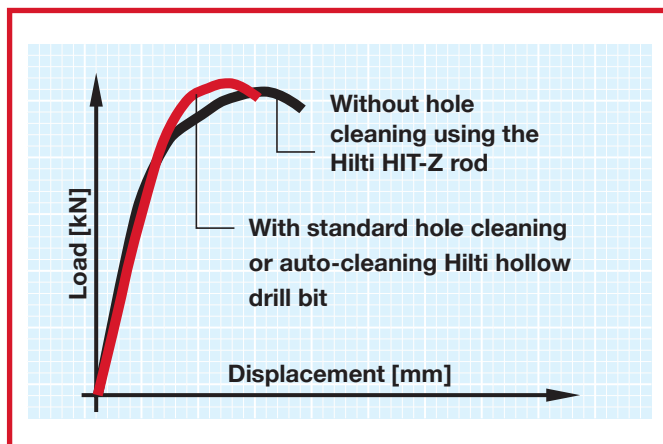
It's no secret that adhesive anchors encounter varying jobsite conditions. Hilti HIT injection technology, reliably and safely, combats this issue. Now Hilti SAFEset Technology, which offers the choice of either hollow drill bits with a Hilti vacuum system or HIT-Z anchor rods, takes a giant leap forward, by removing a step in the installation process entirely.

### Potential effects of no hole cleaning



When a threaded rod or rebar is set with conventional injection adhesive, the load it can hold may be significantly reduced, if the hole is inadequately cleaned after drilling. The Hilti SAFEset system eliminates a cleaning step while still providing excellent load values.

### Hilti HIT injectable adhesive with SAFEset Technology



The new SAFEset system featuring HIT-HY 200 or HIT-RE 500 allows a fastening point to take high loads, as though the hole was cleaned manually using traditional installation methods.



### HIT-Z anchor rods For use with HIT-HY 200 only.

Ordering designation	Drill bit diameter	Fastening thickness at standard embedment depth	Tightening torque	Item no
HIT-Z M8x80	10 mm	8 mm	10 Nm	2018364
HIT-Z M8x100	10 mm	28 mm	10 Nm	2018365
HIT-Z M8x120	10 mm	48 mm	10 Nm	2018366
HIT-Z M10x95	12 mm	22 mm	25 Nm	2018367
HIT-Z M10x115	12 mm	42 mm	25 Nm	2018368
HIT-Z M10x135	12 mm	62 mm	25 Nm	2018369
HIT-Z M10x160	12 mm	87 mm	25 Nm	2018410
HIT-Z M12x105	14 mm	29 mm	40 Nm	2018411
HIT-Z M12x140	14 mm	64 mm	40 Nm	2018412
HIT-Z M12x155	14 mm	79 mm	40 Nm	2018413
HIT-Z M12x196	14 mm	120 mm	40 Nm	2018415
HIT-Z M16x155	18 mm	38 mm	80 Nm	2018416
HIT-Z M16x175	18 mm	58 mm	80 Nm	2018417
HIT-Z M16x205	18 mm	88 mm	80 Nm	2018418
HIT-Z M16x240	18 mm	123 mm	80 Nm	2018419
HIT-Z M20x215	22 mm	91 mm	150 Nm	2018420
HIT-Z M20x250	22 mm	126 mm	150 Nm	2018421

Also available in stainless steel.

### Hollow drill bits For use with HIT-HY 200 or HIT-RE 500 only.

Ordering designation	Drill bit diameter	Working length	Item no
TE-CD 12/33	12 mm	240 mm	2018940
TE-CD 14/37	14 mm	240 mm	2018942
TE-CD 16/37	16 mm	240 mm	2018945
TE-CD 18/37	18 mm	240 mm	2018946
TE-YD 16/59	16 mm	400 mm	2018956
TE-YD 18/59	18 mm	400 mm	2018957
TE-YD 20/59	20 mm	400 mm	2018959
TE-YD 22/59	22 mm	400 mm	2018960
TE-YD 25/59	25 mm	400 mm	2018962
TE-YD 28/59	28 mm	400 mm	2018964
TE-YD 32/59	32 mm	400 mm	2018966

### Contact Hilti for the SAFEset solution that suits your needs:

1. **Hilti engineers and account managers**
2. **Customer Service** T 131 292
3. **Online** [www.hilti.com.au](http://www.hilti.com.au)
4. **Hilti centres** - check [www.hilti.com.au/centres](http://www.hilti.com.au/centres) for locations

### Productivity plus



Combi hammers



Vacuum cleaners



HIT chemical anchors and dispensers

## Hilti. Outperform. Outlast.

Hilti (Aust.) Pty Ltd | Level 5, 1G Homebush Bay Drive | Rhodes | NSW 2138 | T 131 292 | F 1300 135 042 | [www.hilti.com.au](http://www.hilti.com.au)



SDS plus



SDS max

