



KCM-MD Short Plate $\frac{5}{8}$ " + $\frac{3}{4}$ "

222259-01.2025

40 KWIK CAST
KCM-MD S $\frac{5}{8}$ " + $\frac{3}{4}$ "
GRY-BLK
#2221703



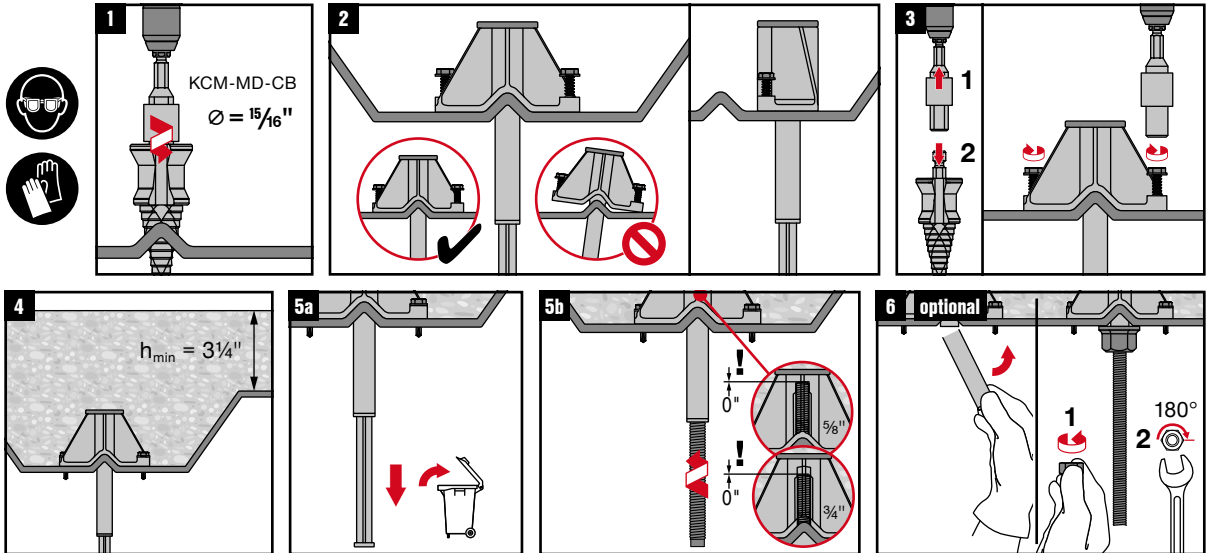
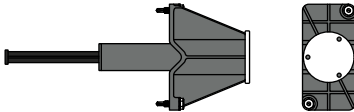
Info | Shop



qr.hilti.com/2221703

Batch Tracking
Information

Made in Taiwan
Hilti = trademark of Hilti Corp., Schaun, LI



UL maximum pipe size allowed is 8 NPS in the lower flute.