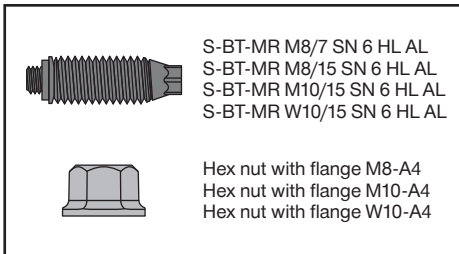
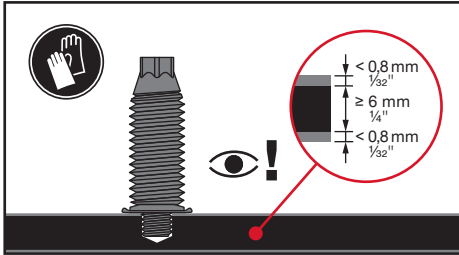
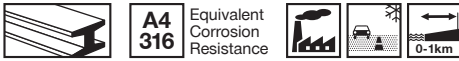


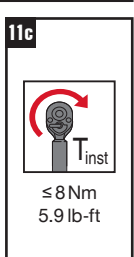
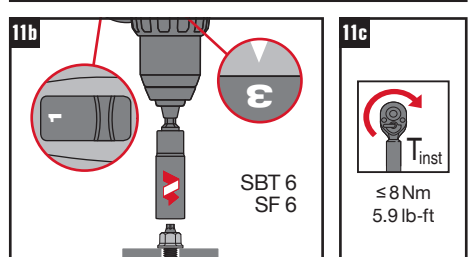
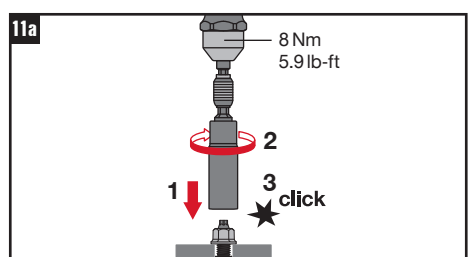
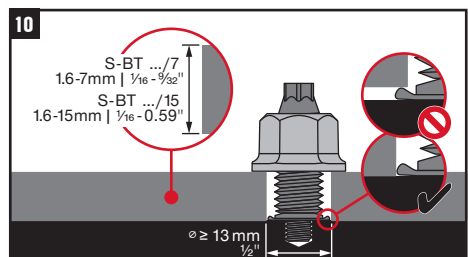
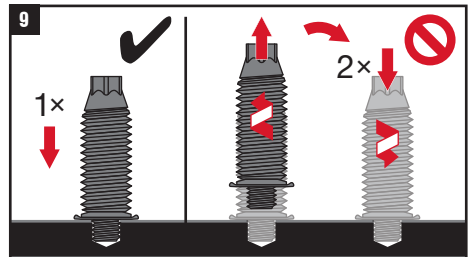
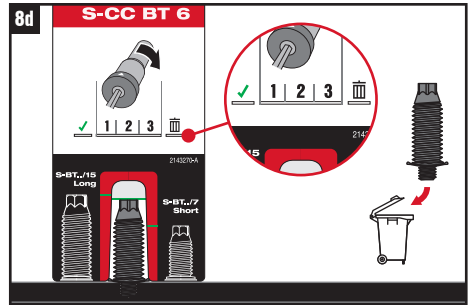
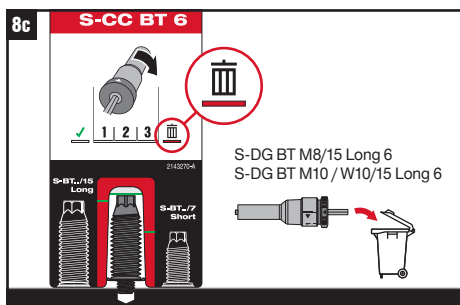
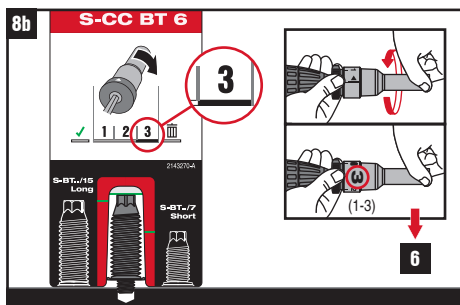
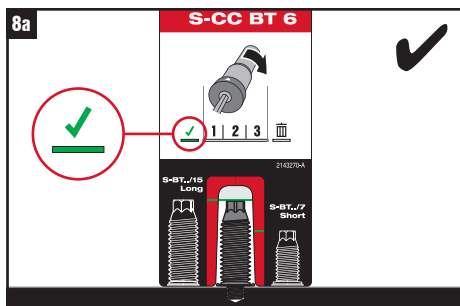
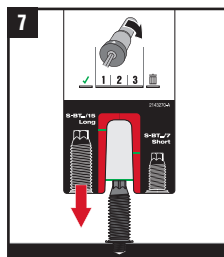
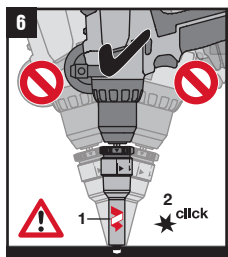
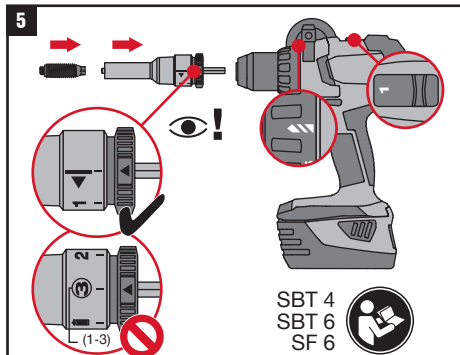
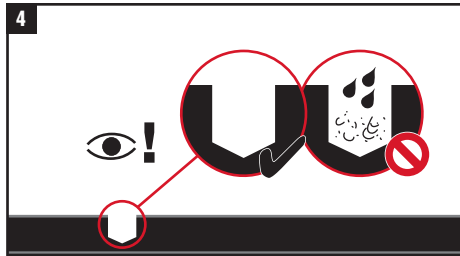
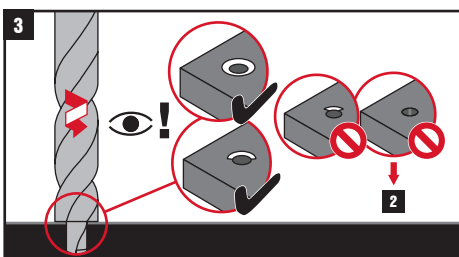
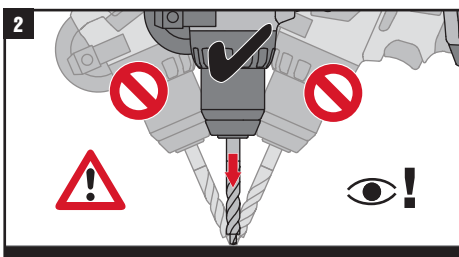
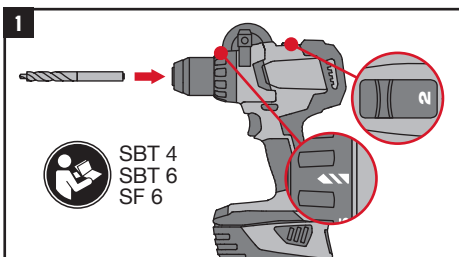


S-BT-MR M8/M10/W10 SN 6 HL AL

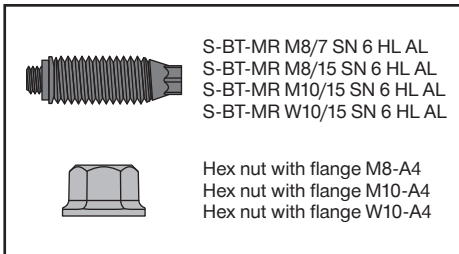
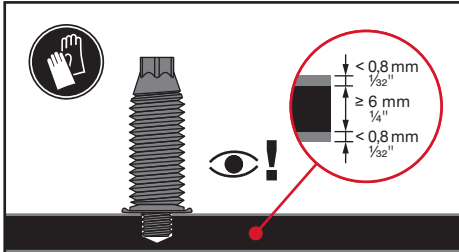
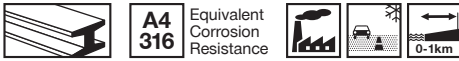
2353590-03.2023



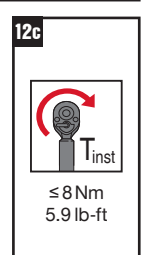
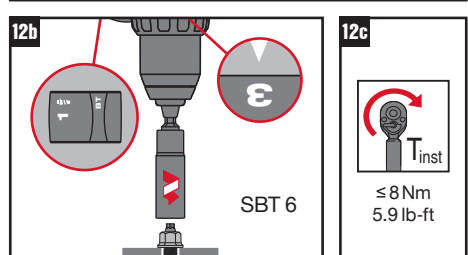
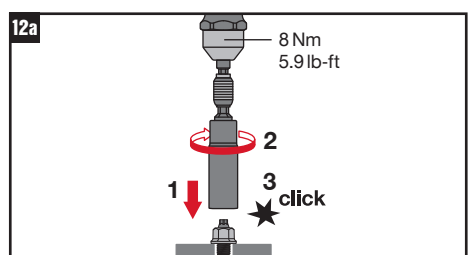
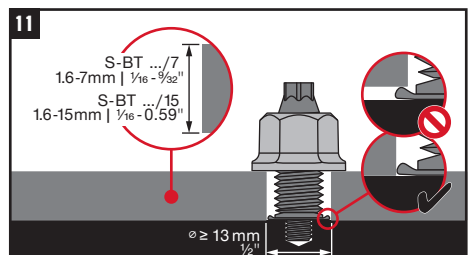
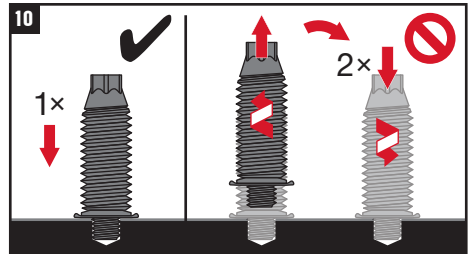
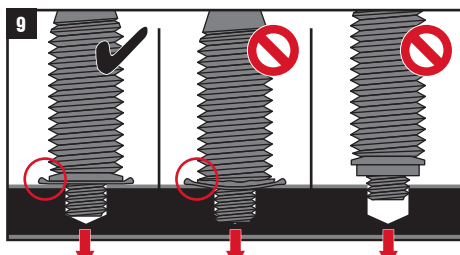
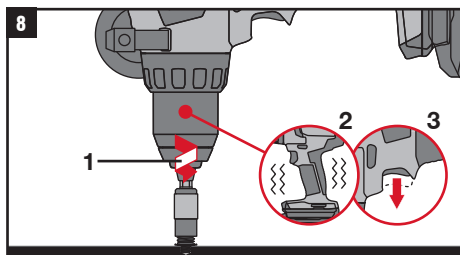
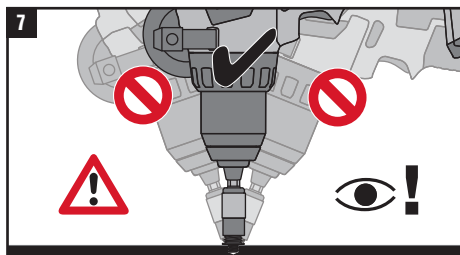
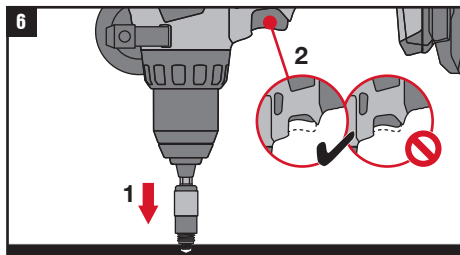
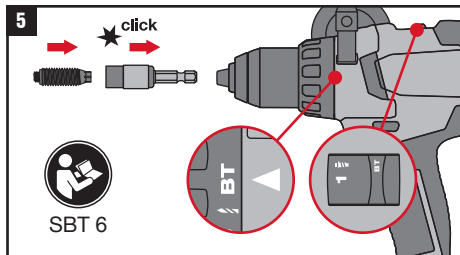
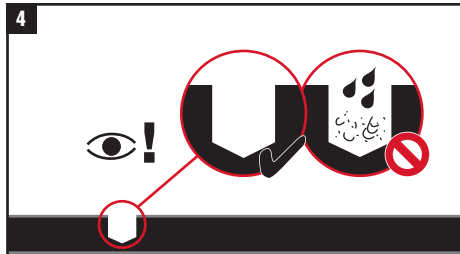
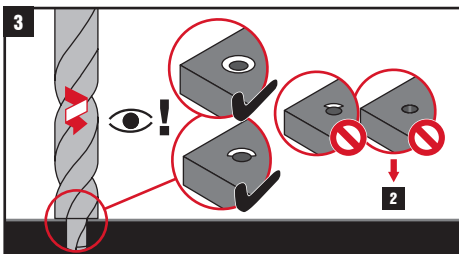
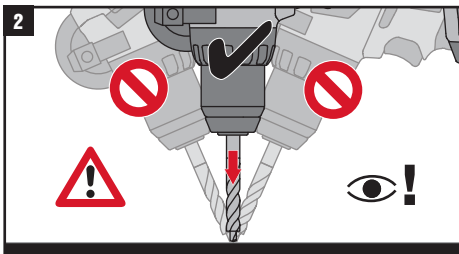
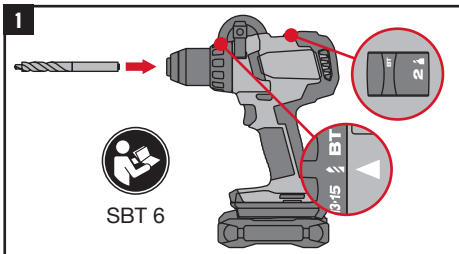
	SBT 4	SBT 6 SF 6
	TS-BT 5.5-74 AL	
	S-DG BT M8/15 Long 6 S-DG BT M10/W10/15 Long 6	
	Torque tool X-BT 1/4" 8 Nm / 5.9 lb-ft	
	S-NS 13 C 95/3 1/4" (M8) S-NS 15 C 95/3 1/4" (M10) S-NS 9/16" C 95/3 1/4" (W10)	
	S-CC BT 6	



CE
23
Hilti Corporation, Feldkircherstrasse 100, FL-9494 Schaan, Liechtenstein
Hilti-SF-DoP-044
ETA-23/0001
EAD 333037-00-0602
0672-CPR
Threaded studs for connection of materials to structural steel and aluminium members
www.hilti.group



	SBT 6
	TS-BT 5.5-74 AL
	S-SH BT M8/M10/W10
	Torque tool X-BT 1/4" 8 Nm / 5.9 lb-ft
	S-NS 13 C 95/3 1/4" (M8)
	S-NS 15 C 95/3 1/4" (M10)
	S-NS 9/16" C 95/3 1/4" (W10)
	S-IC BT



CE	
23	
Hilti Corporation, Feldkircherstrasse 100, FL-9494 Schaan, Liechtenstein	
Hilti-SF-DoP-044	
ETA-23/0001	
EAD 333037-00-0602	
0672-CPR	
Threaded studs for connection of materials to structural steel and aluminium members	
www.hilti.group	